

Enrollment Report 2010



October 1st Snapshot

Bloomington Public Schools

Prepared by:

Vicky Daly

Technology & Information Services

Table of Contents



Topic	Slide
Introduction	3
Dynamic Data Site	4
Enrollment Information Summary – Actual vs. Projected	5
October Enrollment by School & Grade	6
Demographics – Secondary Schools	7
Demographics – Elementary Schools	8
F/R Eligibility by School	9
District Student Ethnic Profile	10
Historical Trends	11
Glossary – A Guide to Abbreviations & Terms Used in this Report	19

Introduction

Why a Snapshot?

The October 1, 2010 snapshot is designed to describe our K12 enrollment demographics at this single point in time. Historical trends in enrollment have been included in this report to help illustrate the story of our changing enrollment over the past 10 years.

Enrollment impacts many aspects of the Bloomington Public Schools. The data shared in this report is intended to assist decision makers and interested citizens in creating and maintaining an exceptional educational system for all learners in our community.



Dynamic Data Site

Information on Demand

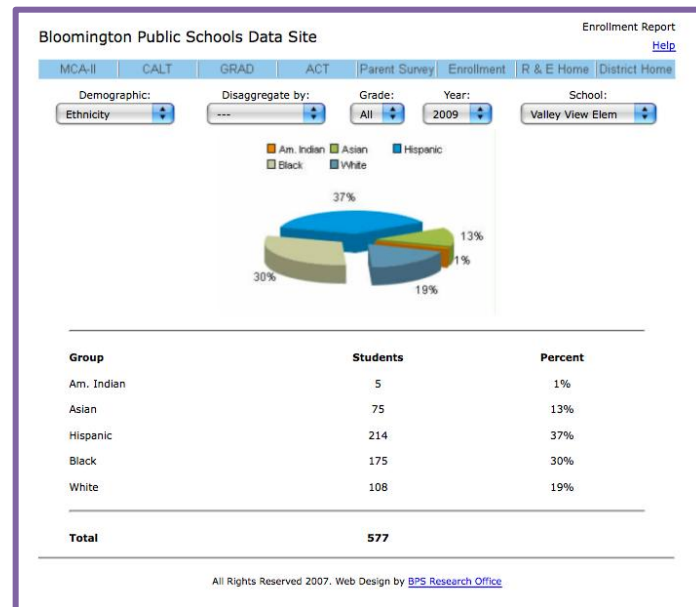


<http://re.bloomington.k12.mn.us/results/demographics.cfm>

For larger school districts, enrollment often changes on a daily basis. This data on this web site is refreshed each day to reflect the current student demographic.

This dynamic site allows anyone with web access to request summary information by school or grade in regard to the following areas:

- Enrollment
- Ethnicity
- Free/Reduced
- Test scores
- Parent Survey Results



Enrollment Information Summary - 2010



District-Wide Actual vs. Projected

	Oct. 1 2009	Oct. 1 2010	Projection 2010	Diff. from Projection	Diff. from Last Year
K-5	4,480	4,580	4,435	145	100
GR. 6-8	2,228	2,327	2,249	78	99
GR. 9-12	3,362	3,254	3,315	-61	-108
K-12	10,070	10,161	9,999	162	91

Elementary Schools Enrollment Actual vs. Projected

	HC	IM	NH	OG	OL	PB	RV	VV	WB	WW	Total
CSM 10/1/09	444	405	501	461	487	354	382	557	503	386	4,480
Projection 2010	449	406	501	471	466	356	359	558	491	378	4,435
CSM 10/1/10	442	418	500	490	501	365	432	579	478	375	4,580
Change from Projection	-7	12	-1	19	35	9	73	21	-13	-3	145

Secondary Schools Enrollment Actual vs. Projected

	VVMS	OGMS	OLMS	JEFF	KENN	Total
CSM 10/1/09	687	815	726	1,735	1,627	5,590
Projection 2010	672	816	761	1,714	1,601	5,564
CSM 10/1/10	692	815	820	1,669	1,585	5,581
Change from Projection	20	-1	59	-45	-16	17

CSM = Current Status Membership represents the number of students enrolled on a specific date.
 Projection 2010 = Projected number of students at each school for the 2010-2011 school year.

2010 Enrollment – By School & Grade



	K	1	2	3	4	5	6	7	8	9	10	11	12	Total
JEFF										410	448	404	407	1,669
KENN										403	415	403	364	1,585
OGM							281	253	281					815
OLM							298	261	261					820
VVM							233	210	249					692
HC	74	78	82	67	76	65								442
IM	74	71	61	70	80	62								418
NH	77	85	81	85	91	81								500
OGE	94	78	71	76	85	86								490
OLE	83	66	82	88	71	111								501
PB	76	48	58	57	60	66								365
RV	69	62	77	74	86	64								432
VVE	110	92	91	97	82	107								579
WB	81	75	74	71	90	87								478
WW	77	69	54	58	48	69								375
Grade Total	815	724	731	743	769	798	812	724	791	813	863	807	771	10,161

Demographics – Elementary Schools



	Total	HC	IM	NH	OGE	OLE	PB	RV	VVE	WB	WW
K-5 Enrollment Total	4,580	442	418	500	490	501	365	432	579	478	375
Gender - F	2,199	231	208	243	239	243	183	175	279	232	166
Gender - M	2,381	211	210	257	251	258	182	257	300	246	209
Ethnicity - American Indian	39	4	7	2	6	1	4	2	3	5	5
Ethnicity - Asian/Pacific Islander	489	29	51	52	74	55	35	39	73	49	32
Ethnicity - Black	905	33	91	76	123	93	43	54	203	132	57
Ethnicity - Hispanic	684	18	96	28	77	47	35	24	211	107	41
Ethnicity - White	2,463	358	173	342	210	305	248	313	89	185	240
Ethnicity - Percent	46%	19%	59%	32%	57%	39%	32%	28%	85%	61%	36%
No ESL	3,717	441	296	453	345	422	332	414	346	337	331
ESL	863	1	122	47	145	79	33	18	233	141	44
ESL Students - Percent	19%	0%	29%	9%	30%	16%	9%	4%	40%	29%	12%
F/R Lunch - FREE	1,527	46	186	82	255	123	62	87	382	203	101
F/R Lunch - REDUCED	409	20	48	30	39	48	21	24	82	66	31
F/R Lunch - FREE & REDUCED	1,936	66	234	112	294	171	83	111	464	269	132
F/R Lunch - NOT ELIGIBLE	2,644	376	184	388	196	330	282	321	115	209	243
F/R Percent	42%	15%	56%	22%	60%	34%	23%	26%	80%	56%	35%
No SpEd	4,007	403	373	432	430	435	324	356	524	422	308
SpEd	573	39	45	68	60	66	41	76	55	56	67
SpEd Percent	13%	9%	11%	14%	12%	13%	11%	18%	9%	12%	18%
Non-Resident Enrollment	256	29	26	32	5	22	34	53	17	23	15
Resident Enrollment	4,324	413	392	468	485	479	331	379	562	455	360
Non-Resident Percent	6%	7%	6%	6%	1%	4%	9%	12%	3%	5%	4%

Demographics – Secondary Schools

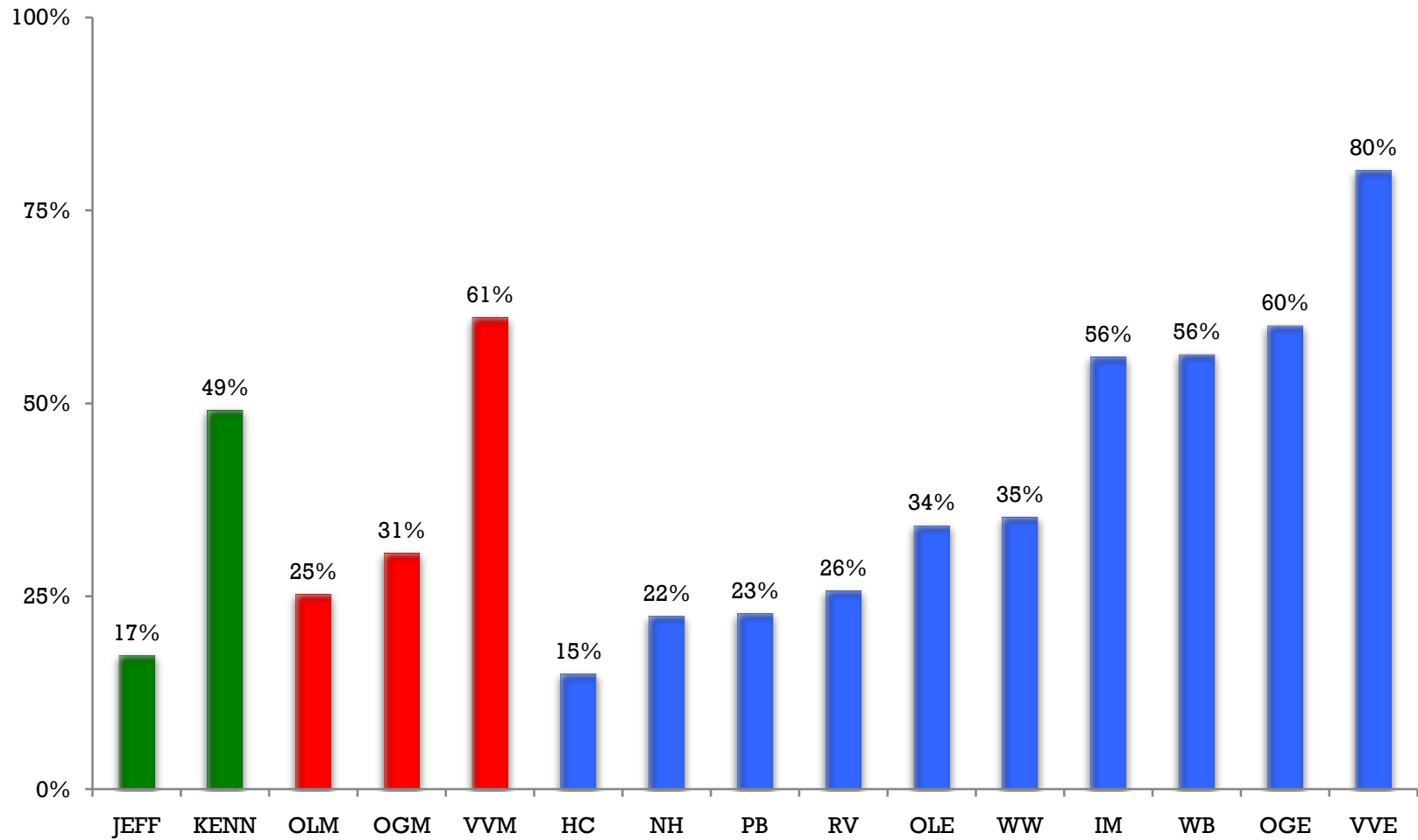


	Total	JEFF	KENN	OGM	OLM	VVM
6-12 Enrollment	5,581	1,669	1,585	815	820	692
Gender - F	2,720	813	764	412	399	332
Gender - M	2,861	856	821	403	421	360
Ethnicity - American Indian	62	16	15	10	3	18
Ethnicity - Asian/Pacific Islander	540	118	186	85	84	67
Ethnicity - Black	916	130	364	120	115	187
Ethnicity - Hispanic	562	83	200	60	40	179
Ethnicity - White	3,501	1,322	820	540	578	241
Diversity - Percent	37%	21%	48%	34%	30%	65%
No ESL	5,268	1,665	1,461	770	801	571
ESL	313	4	124	45	19	121
ESL Students - Percent	6%	0%	8%	6%	2%	17%
F/R Lunch - FREE	1,490	181	619	183	162	345
F/R Lunch - REDUCED	456	108	159	66	45	78
F/R Lunch - FREE & REDUCED	1,946	289	778	249	207	423
F/R Lunch - NOT ELIGIBLE	3,635	1,380	807	566	613	269
F/R Percent	35%	17%	49%	31%	25%	61%
No SpEd	4,884	1,493	1,375	712	699	605
SpEd	697	176	210	103	121	87
SpEd Percent	12%	11%	13%	13%	15%	13%
Non-Resident Enrollment	243	67	62	44	40	30
Resident Enrollment	5,338	1,602	1,523	771	780	662
Non-Resident Percent	4%	4%	4%	5%	5%	4%

F/R Eligibility by School



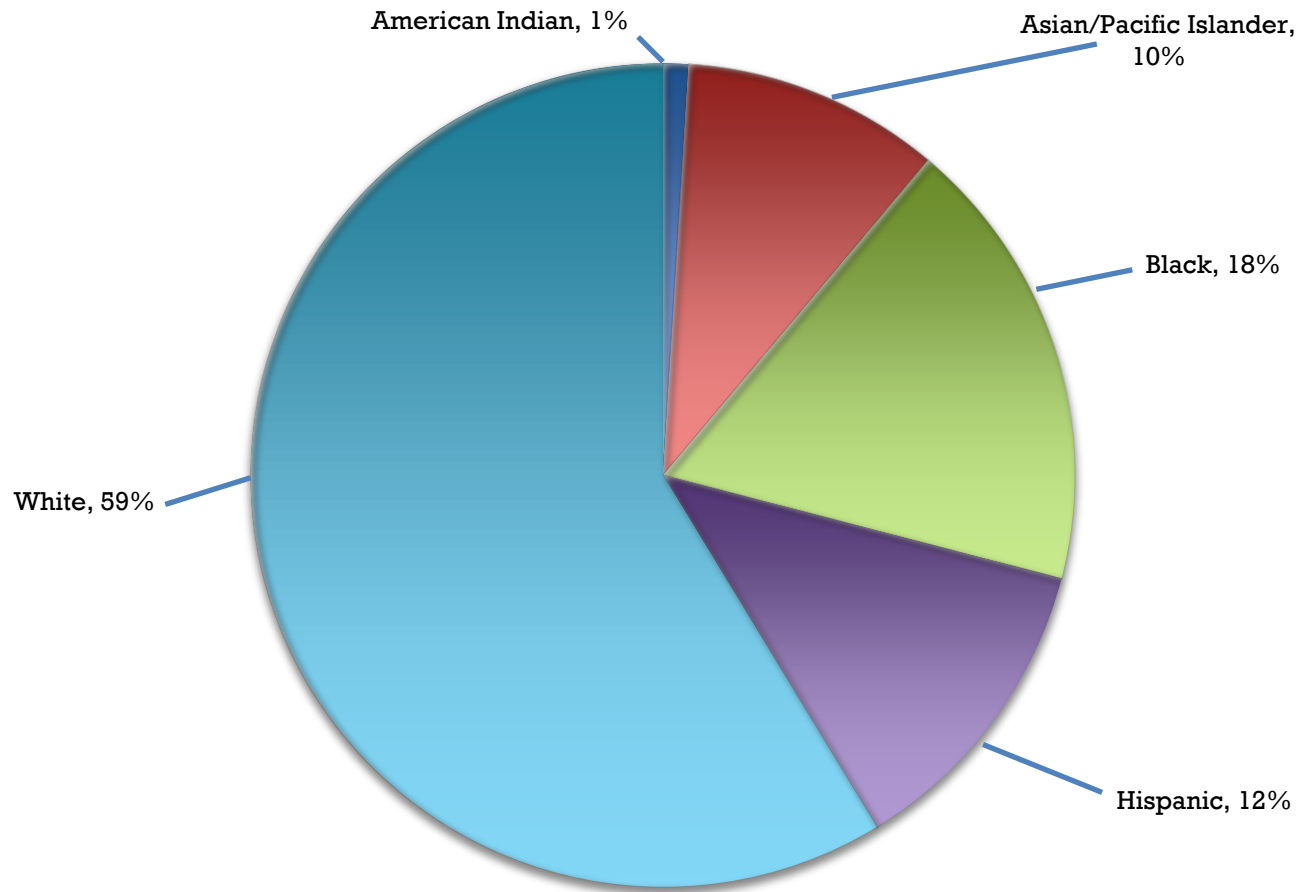
38% of students district-wide qualify for Free and Reduced meal program



District Student Ethnic Profile



District wide diversity = 41%



Historical Trends

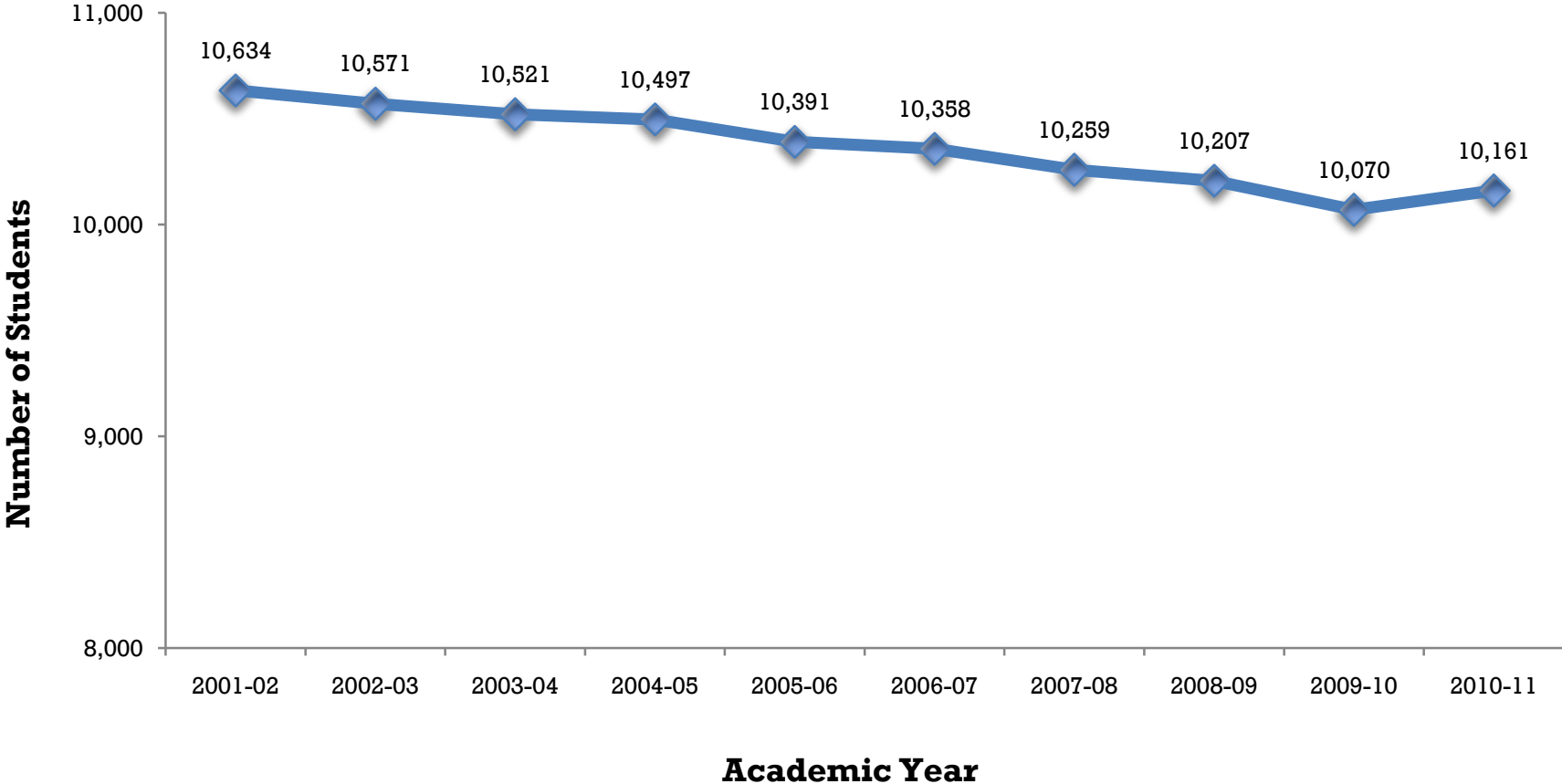
- A closer look at
 - Overall Enrollment
 - Racial Diversity
 - Free and Reduced



Enrollment – Past Ten Years

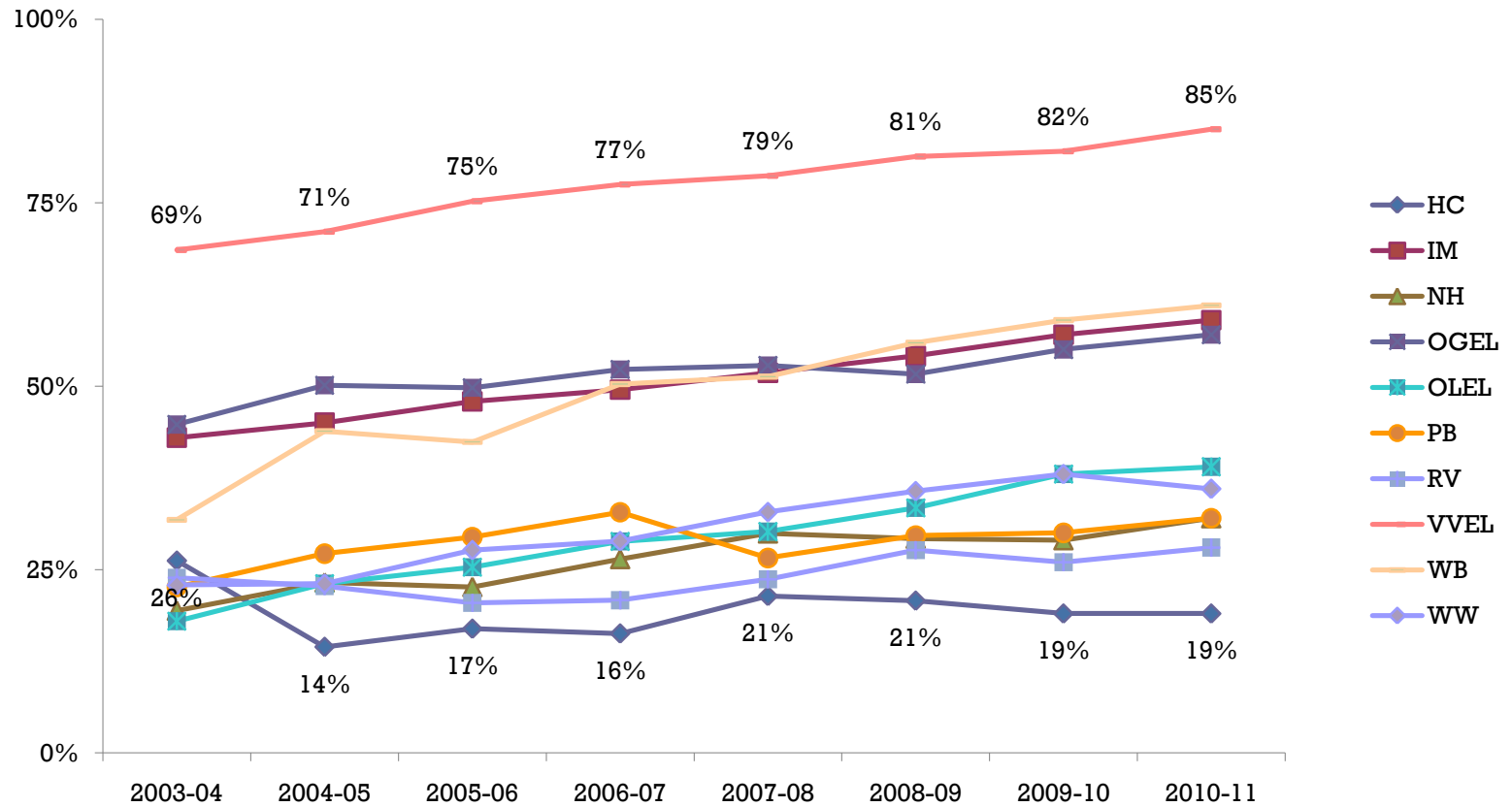


Student Enrollment: 2001-2010



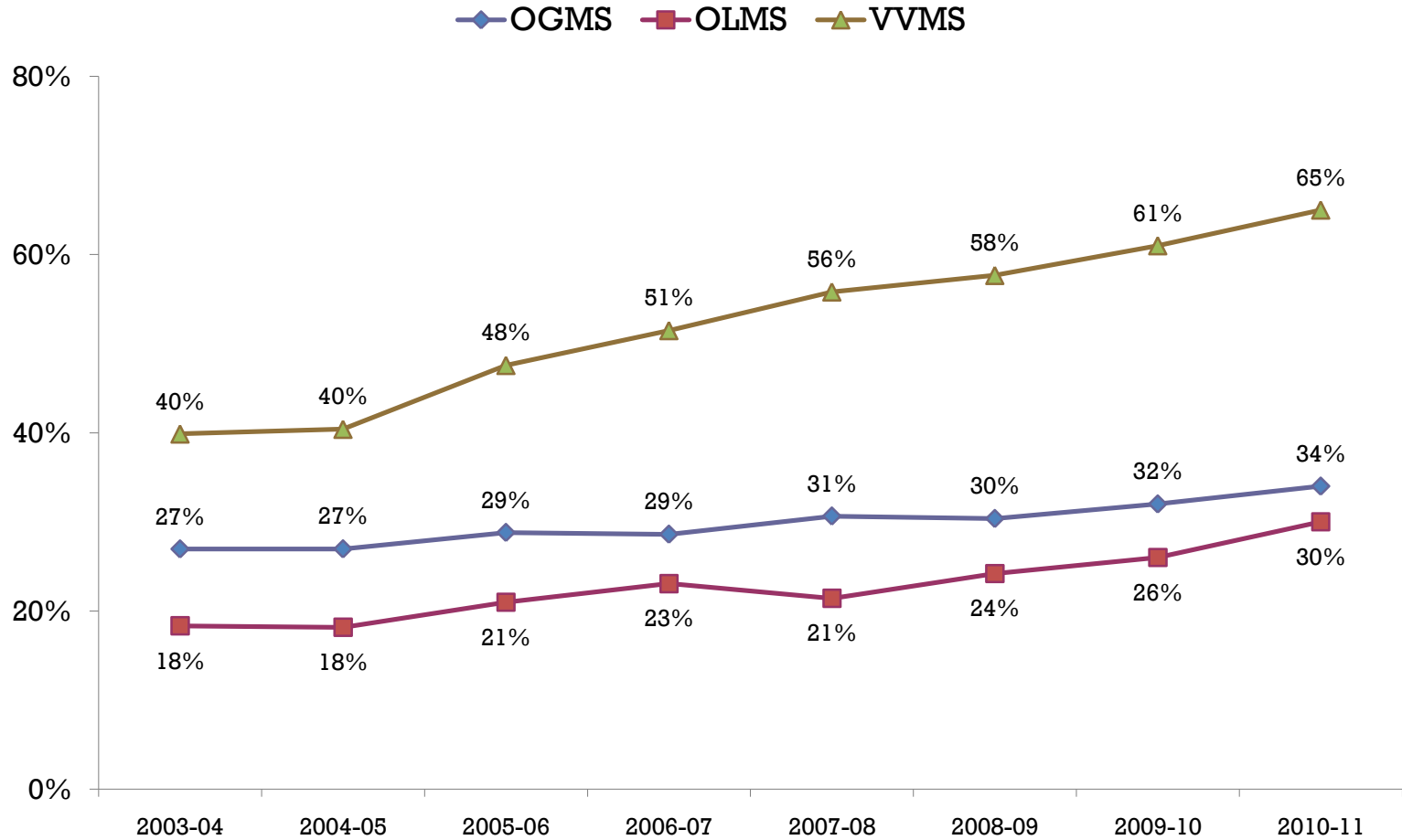
Racial Diversity

Elementary Schools = 46%



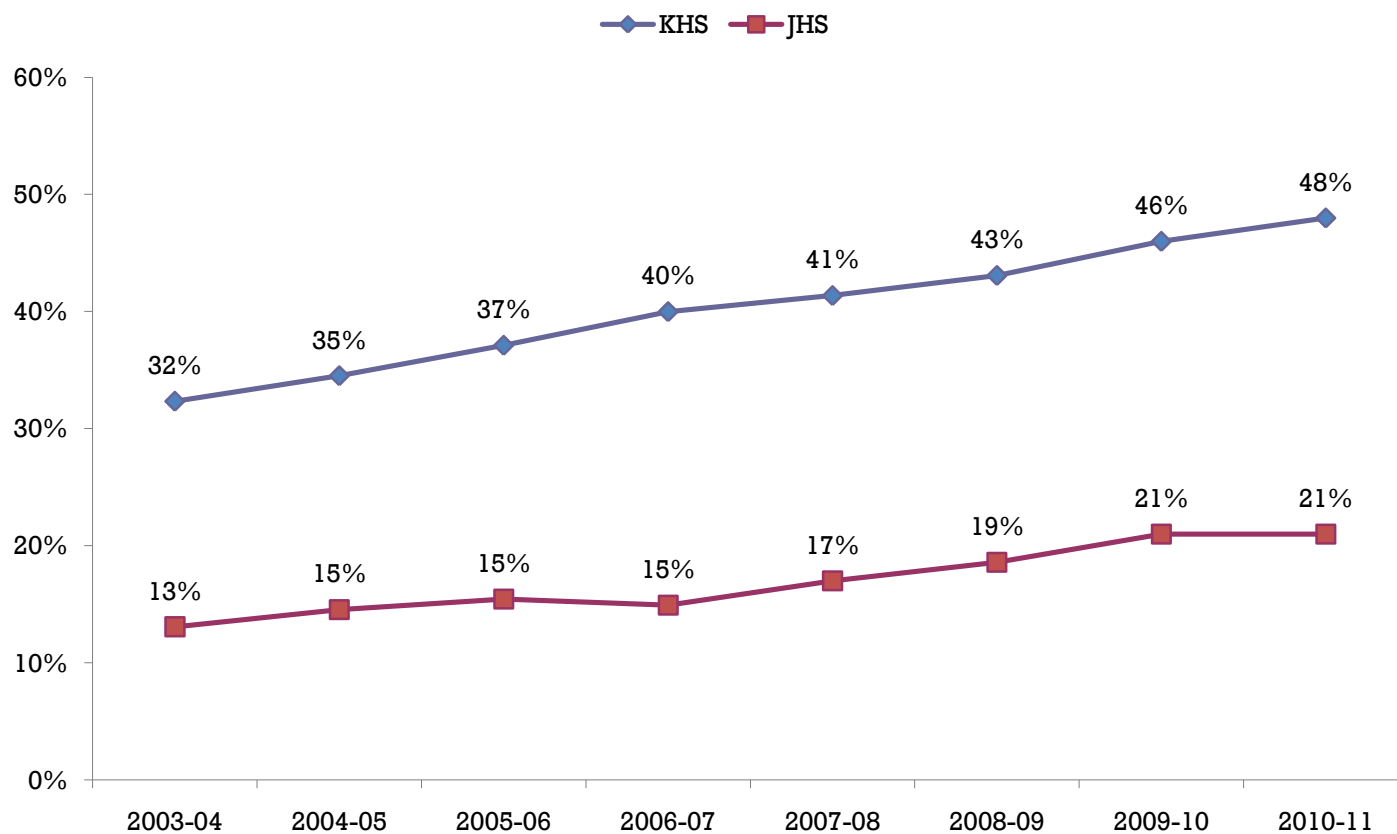
Racial Diversity

Middle Schools = 42%



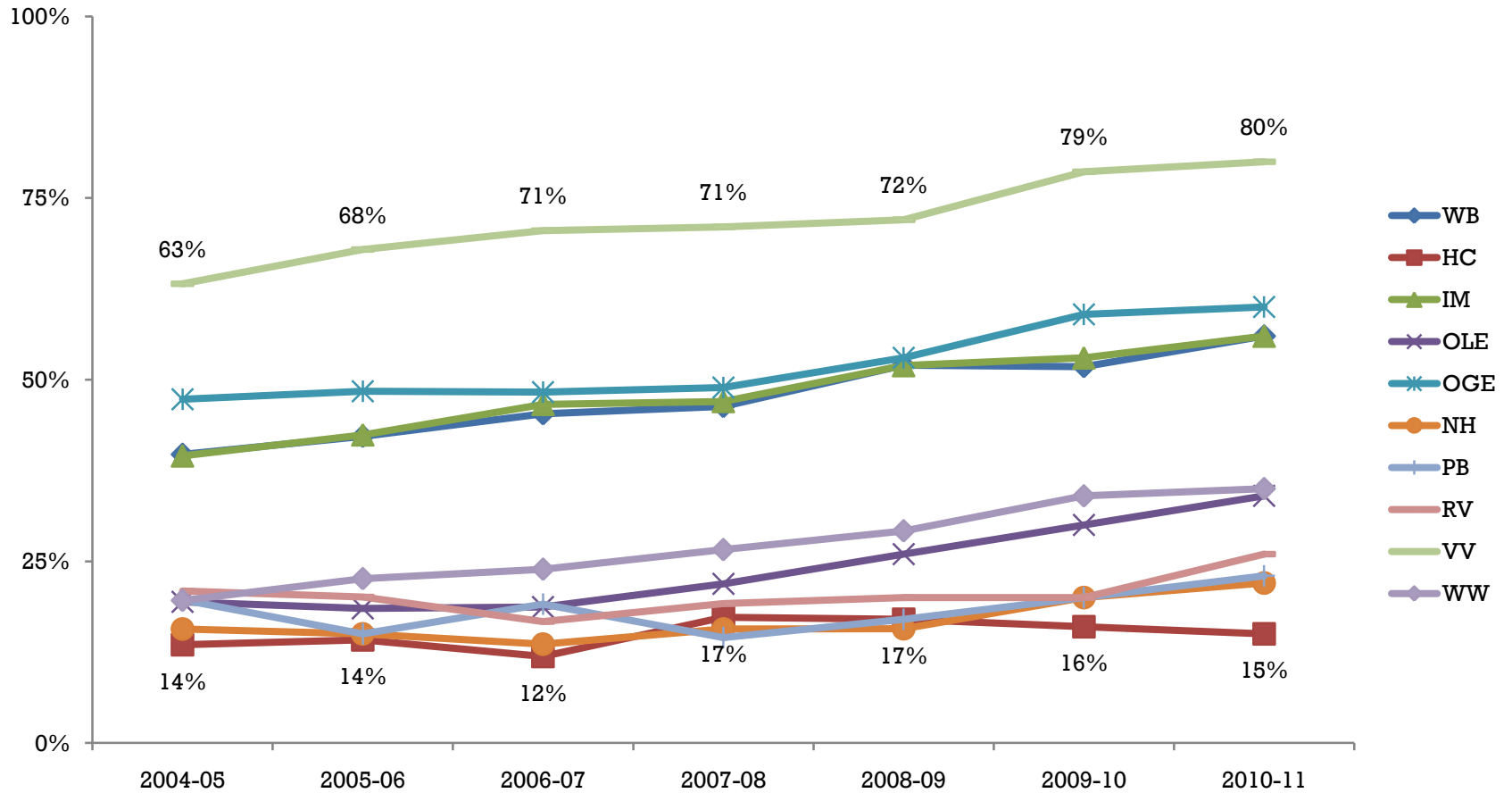
Racial Diversity

High Schools = 34%



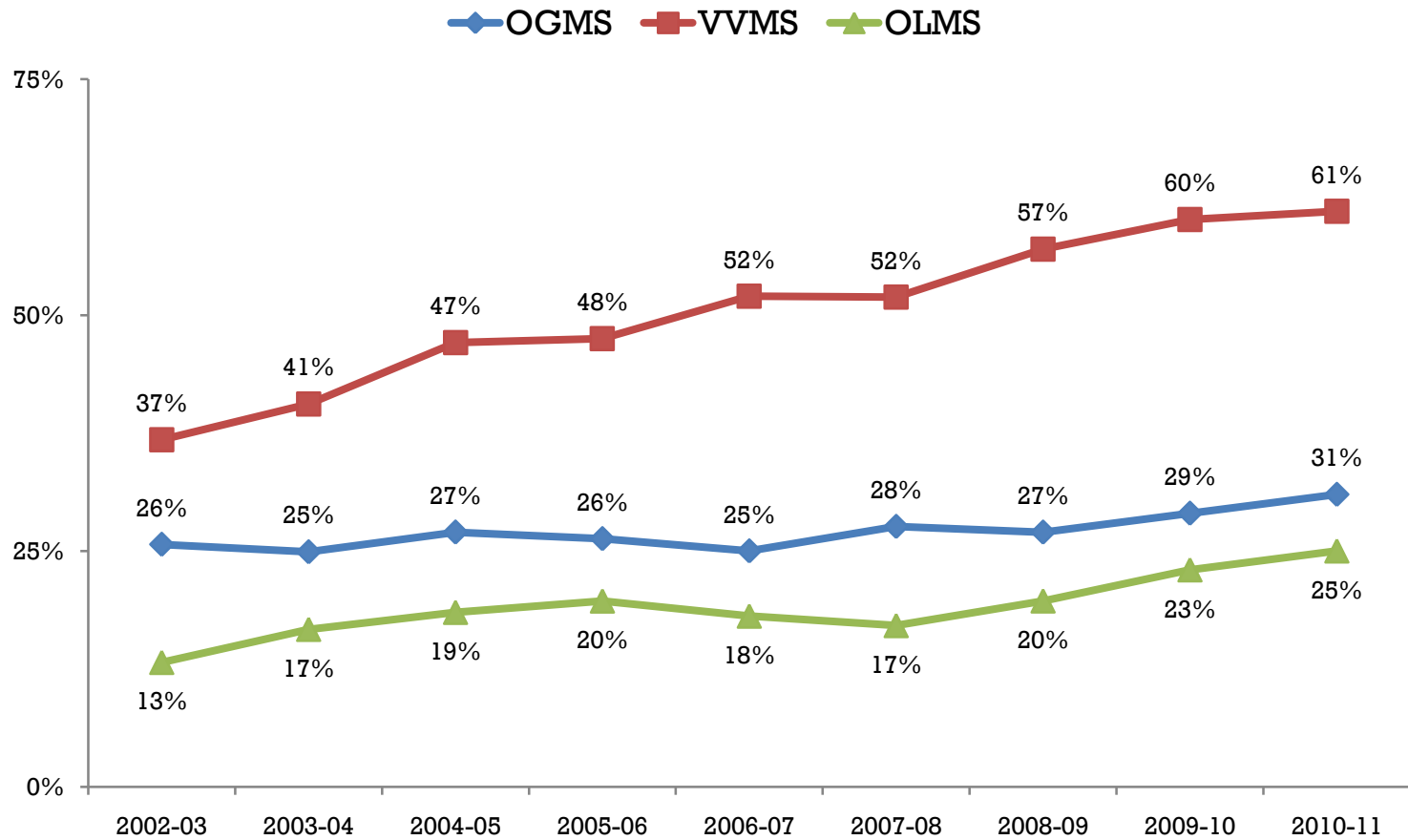
Free & Reduced

Elementary Schools = 42%



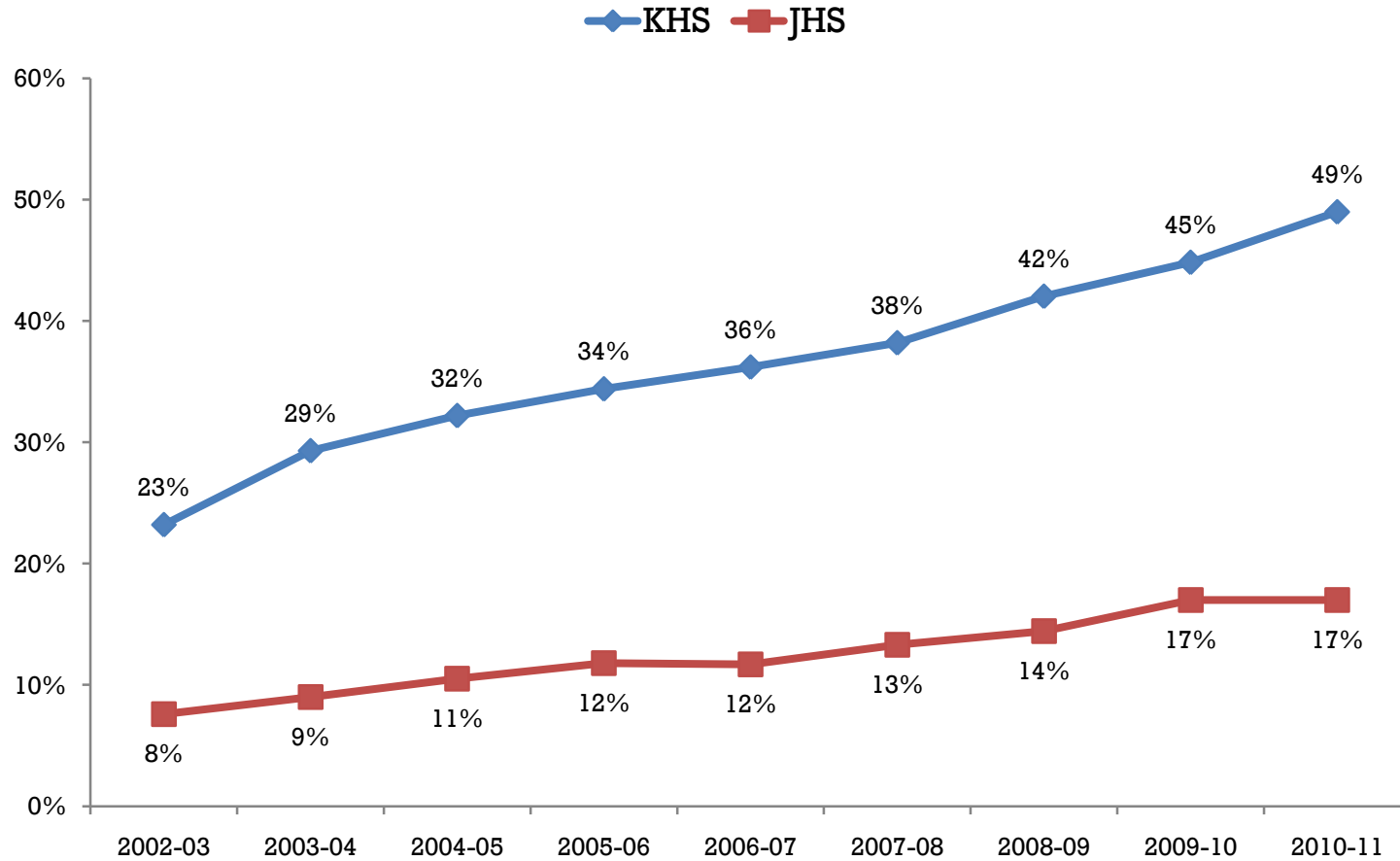
Free & Reduced

Middle Schools = 38%



Free & Reduced

High Schools = 33%



Glossary



Our Schools		Definition	
JEFF	Jefferson High School	CSM	Current Status Membership
KENN	Kennedy High School	ESL	English as a Second Language
OGMS	Oak Grove Middle School	SpEd	Special Education
OLMS	Olson Middle School	F/R	Eligible for Free or Reduced Lunch
VVMS	Valley View Middle School		
HC	Hillcrest Elementary		
IM	Indian Mounds Elementary		
NH	Normandale Hills Elementary		
OGE	Oak Grove Elementary		
OLE	Olson Elementary		
PB	Poplar Bridge Elementary		
RV	Ridgeview Elementary		
VVE	Valley View Elementary		
WB	Washburn Elementary		
WW	Westwood Elementary		